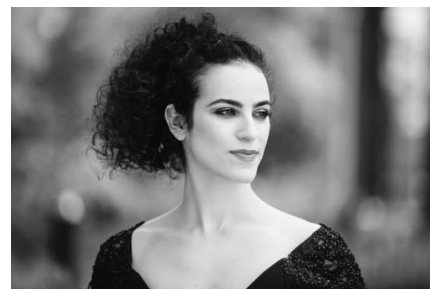


EMILY MISCH

SOPRANO



OPERNREPERTOIRE

Britten	<i>The Rape of Lucretia</i>	Lucia
	<i>The Turn of the Screw</i>	Governess
Corigliano	<i>The Ghosts of Versailles</i>	Florestine
Dove	<i>Flight</i>	Controller
Gounod	<i>Roméo et Juliette</i>	Juliette
Mozart	<i>Don Giovanni</i>	Zerlina
	<i>Die Entführung aus dem Serail</i>	Konstanze
	<i>Der Schauspieldirektor</i>	Madame Herz
	<i>Die Zauberflöte</i>	Königin der Nacht
Offenbach	<i>Les Contes d'Hoffmann</i>	Olympia, Antonia, Giulietta, Stella
Offenbach	<i>La Périchole</i>	Berginella
Puccini	<i>La bohème</i>	Musetta
Ravel	<i>L'enfant et les sortilèges</i>	Feu, Princesse, Rossignol
Rossini	<i>La scala di seta</i>	Giulia
	<i>Il viaggio a Reims</i>	Contessa Folleville, Delia
Wagner	<i>Die Feen</i>	Lora

KONZERTREPERTOIRE

Bach	Messe F-Dur, BWV 233
Brahms	<i>Ein deutsches Requiem</i>
Freschi	<i>Giuditta, Giuditta</i>
Händel	<i>Messias</i> , HWV 56
Haydn	<i>Missa in tempore belli</i> , Hob. XXII/9
Mahler	8. Symphonie, Mater Gloriosa
Mozart	Requiem, K. 626
	<i>Exsultate, jubilate</i> , K. 165
Orff	<i>Carmina Burana</i>
Strauss II	<i>Frühlingsstimmen</i> , Op. 410